

# TD-E2137

## Video Intercom Indoor Station



- 7 inch IPS touch screen
- A maximum of 6 indoor stations can be installed in the same room
- Supports live preview of door stations and linked cameras
- Supports snapshot when calling via door station (micro SD card required)
- Supports “Do Not Disturb” function
- Supports noise suppression and echo cancellation
- 8CH zone alarm access function
- Self-define unlocking password
- Supports 2.4G WIFI
- Supports 1CH 12V200mA power output for powering up a sensor

Shenzhen TVT Digital Technology Co., LTD.

Address: 23<sup>rd</sup> Floor, Block B4, Building NO.9, Shenzhen Bay Eco-Technology Park, Nanshan District, Shenzhen,  
Guangdong Province, P.R. China

Tel: +86-755-36995888

Website: <http://en.tvt.net.cn>

Fax: +86-755-33104777

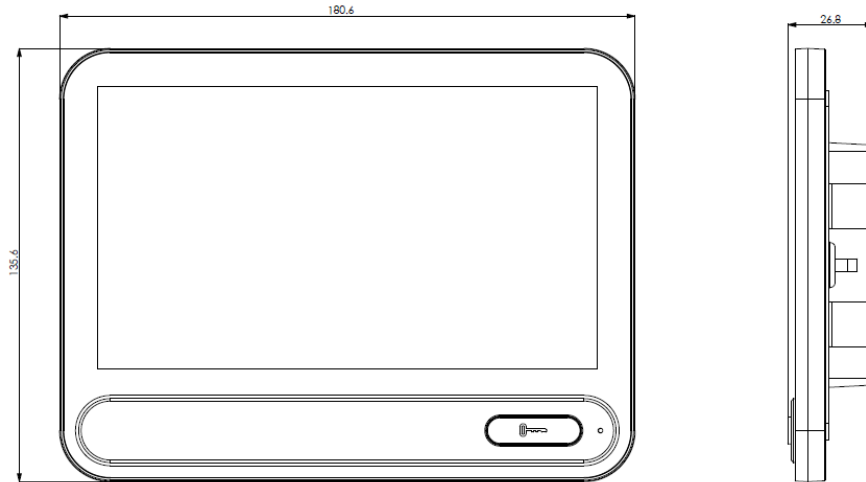
E-mail: [overseas@tvt.net.cn](mailto:overseas@tvt.net.cn)

## Specifications

System	Operating System	Linux
Display	Display Screen	7 inch IPS touch screen
	Display Resolution	1024 × 600, brightness:300 cd/m2
	Operation Method	Capacitive touch screen
Video	Video Input	Max. 4CH videos can be viewed simultaneously
	Network Input Resolution	6MP/5MP/4MP/3MP/1080P/1280×1024/960P/720P/960H/D1/CIF
	Compression	H.265+/H.265/ H.264
Audio	Local Input	Built-in microphone
	Local Output	Built-in speaker
	Compression	G.711(U/A)
Record	Resolution	Up to 8MP
	Frame Rate	NTSC: 30fps; PAL:25fps
Playback	Simultaneous Playback	Max.1CH
Performance	Linked IPC	Max. 16 CH
	Linked Indoor Extensions	Max. 5
Network	Interface	RJ 45 100 Mbps self-adaptive Ethernet port × 1
	Wireless Network	WiFi 802.11b/g/n
	Protocol	TCP / IP, DHCP, DNS, NTP, etc.
	Incoming/Outgoing Bandwidth	40/40Mbps
Interface	Audio	Built-in speaker and microphone, support noise suppression and echo cancellation
	Storage	Built-in micro SD card slot, up to 256GB
	Reset	Yes
	Alarm Input	8CH
	Wi-Fi	Yes,2.4G Wi-Fi
	Unlocking Button	Yes
	RS 485	Reserved
Others	Power	DC12V/POE
	Power Consumption	< 6W
	Dimensions(mm)	180.6×135.6×26.8
	Weight (net)	Approx.0.36kg
	Installation	Wall mounting
	Working Environment	-20°C~50°C, Humidity: less than 95% (non-condensing)
	Certificate	CE, FCC
	Environmental Protection	Complies with Directive EU RoHS, REACH and WEEE

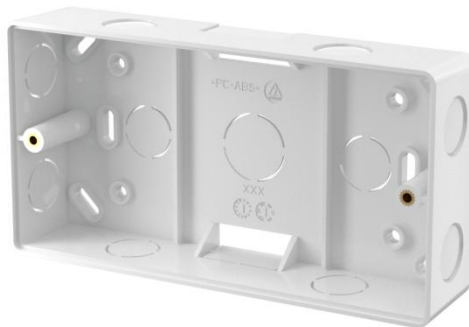
**Dimensions**

Unit (mm)



**Accessory**

Optional:



TD-YZJ1009